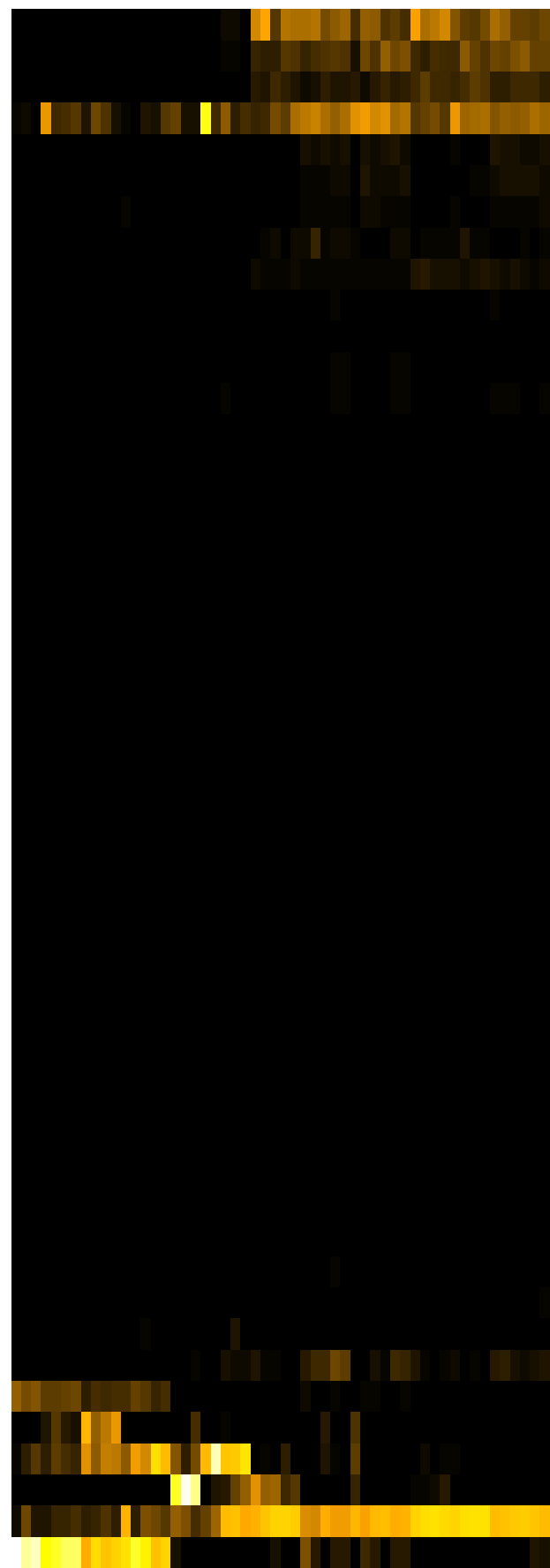
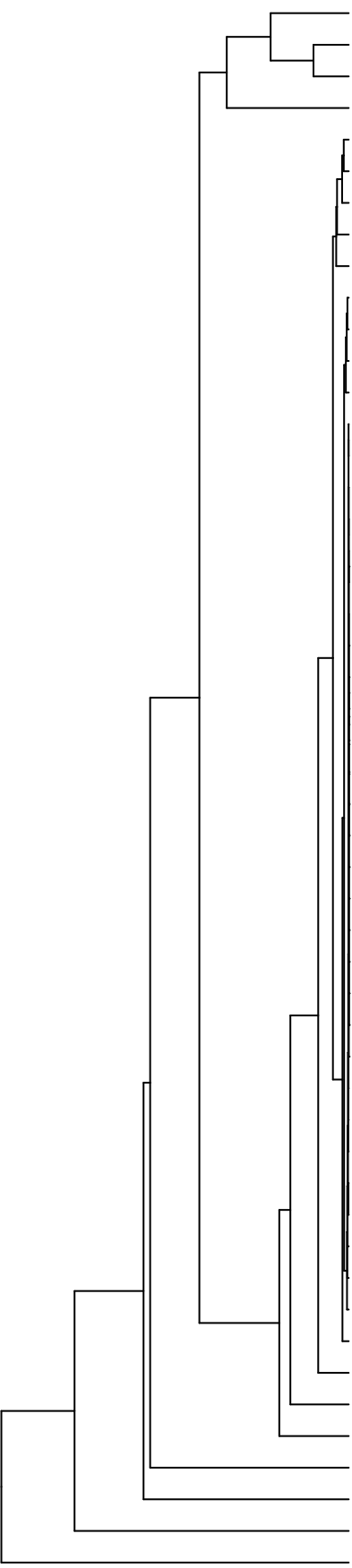


Group006
 I Final -PMA
 G Final -PMA



Veillonella
 Haemophilus
 Granulicatella
 Neisseria
 Aggregatibacter
 Eikenella
 Gemella
 Rothia
 Schaalia
 Porphyromonas
 Prevotella
 Leptotrichia
 Campylobacter
 Lancefieldella
 Lachnoanaerobaculum
 Catonella
 Saccharibacteria_(TM7)_[G-6]
 Oribacterium
 Cutibacterium
 Absconditabacteria_(SR1)_[G-1]
 Phyllobacterium
 Acidovorax
 Acinetobacter
 Lachnospiraceae_[G-2]
 Serratia
 Novosphingobium
 Leifsonia
 Agrobacterium
 Sphingobium
 Riemeirella
 Capnocytophaga
 Microbacterium
 Siccationidurans
 Saccharibacteria_(TM7)_[G-5]
 Lautropia
 Saccharibacteria_(TM7)_[G-1]
 Delftia
 Solobacterium
 Alloprevotella
 Actinomyces
 Stomatobaculum
 Pseudomonas
 Staphylococcus
 Fusobacterium
 Salmonella
 Raoultella
 Klebsiella
 Enterobacter
 Streptococcus
 Citrobacter

F28914.S460
 F28914.S459
 F28914.S447
 F28914.S463
 F28914.S462
 F28914.S464
 F28914.S443
 F28914.S442
 F28914.S605
 F28914.S698
 F28914.S608
 F28914.S600
 F28914.S302
 F28914.S283
 F28914.S303
 F28914.S137
 F28914.S140
 F28914.S297
 F28914.S141
 F28914.S124
 F28914.S304
 F28914.S287
 F28914.S300
 F28914.S282
 F28914.S144
 F28914.S128
 F28914.S126

Samples

Genus